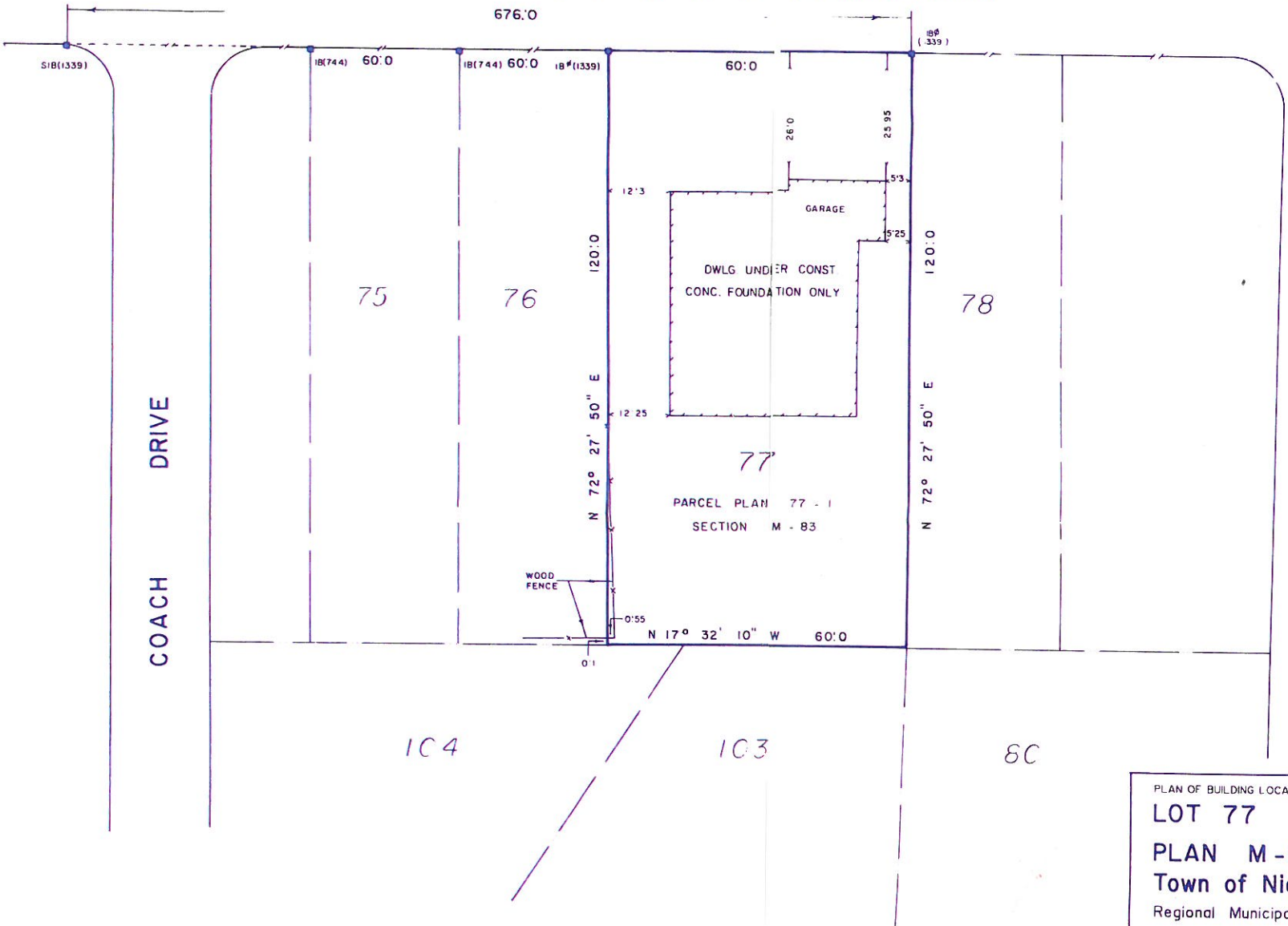
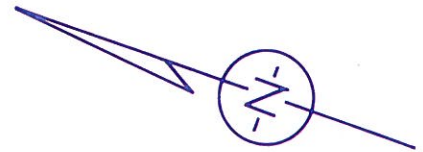


THE PROMENADE

N 17° 32' 10" W (REFERENCE BEARING)



PARCEL PLAN 77 - 1  
SECTION M - 83

PLAN OF BUILDING LOCATION SURVEY OF  
**LOT 77**  
**PLAN M-83**  
**Town of Niagara - on - the - Lake**  
Regional Municipality of Niagara

**CAUTION:** This plan is not valid unless embossed by a Surveyor's seal.

**BEARING NOTE**  
BEARINGS ARE ASTRONOMIC AND DERIVED FROM PLAN M-83

LEGEND	
	SURVEY MONUMENT FOUND
	SURVEY MONUMENT SET
	STANDARD IRON BAR
	SHORT STANDARD IRON BAR
	ROUND IRON BAR
	IRON BAR
	IRON TUBE
	WITNESS
(539)	D. G. URE O.L.S.
(567)	R. BLAKE ERWIN O.L.S.
(744)	R. J. MATTHEWS O.L.S.
(1339)	W.A. MASCOE O.L.S.

SURVEYOR'S CERTIFICATE	
I CERTIFY THAT THE FIELD SURVEY REPRESENTED ON THIS PLAN WAS COMPLETED ON THE 15 <sup>th</sup> DAY OF OCTOBER 1986.	
DATE	NOVEMBER 4, 1986
	THOMAS G. CAHILL Ontario Land Surveyor
Drawn	C. D.
Checked	T. G. C.
Scale	1" = 20'

© MATTHEWS & CAMERON LTD.  
No person may copy, reproduce or alter this plan in whole or in part without the written permission of MATTHEWS & CAMERON LTD.

**MATTHEWS & CAMERON LTD.**  
Ontario Land Surveyors - Professional Engineers  
R. J. MATTHEWS O.L.S.

ANDREW CAMERON O.L.S., P. ENG. 6222 MURRAY ST. NIAGARA FALLS, ONT. PHONE (416) 358-3693 L2G 2K7	THOMAS G. CAHILL O.L.S. 27 WILLIAM ST. ST. CATHARINES, ONT. PHONE (416) 682-1364 L2R 5H9
---	--

Year	1986	LLN	50540	File	SC. 86 - 557
------	------	-----	-------	------	--------------