



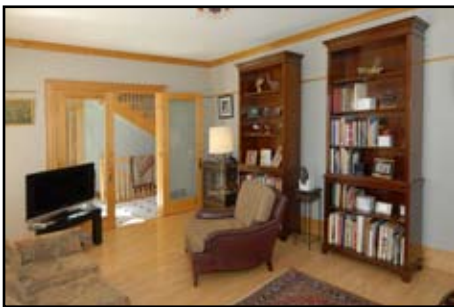
358 Gate Street, Niagara-on-the-Lake

This centre hall 5 bay Georgian is of the highest build quality and is fashioned from renowned Cushwa brick in "Rose Full Range" colour. The oversized lot has been landscaped with exotic trees serviced with a multi-zone sprinkler system. The 3 bay garage is very solid and the concrete floor shows no stress cracks.





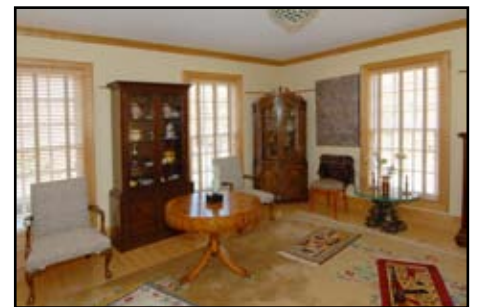
Interior Hall 26'6 x 5'0



Den 12'2 x 16'5



Dining Rm 12'6 x 16'4



Living Rm 16'6 x 15'10

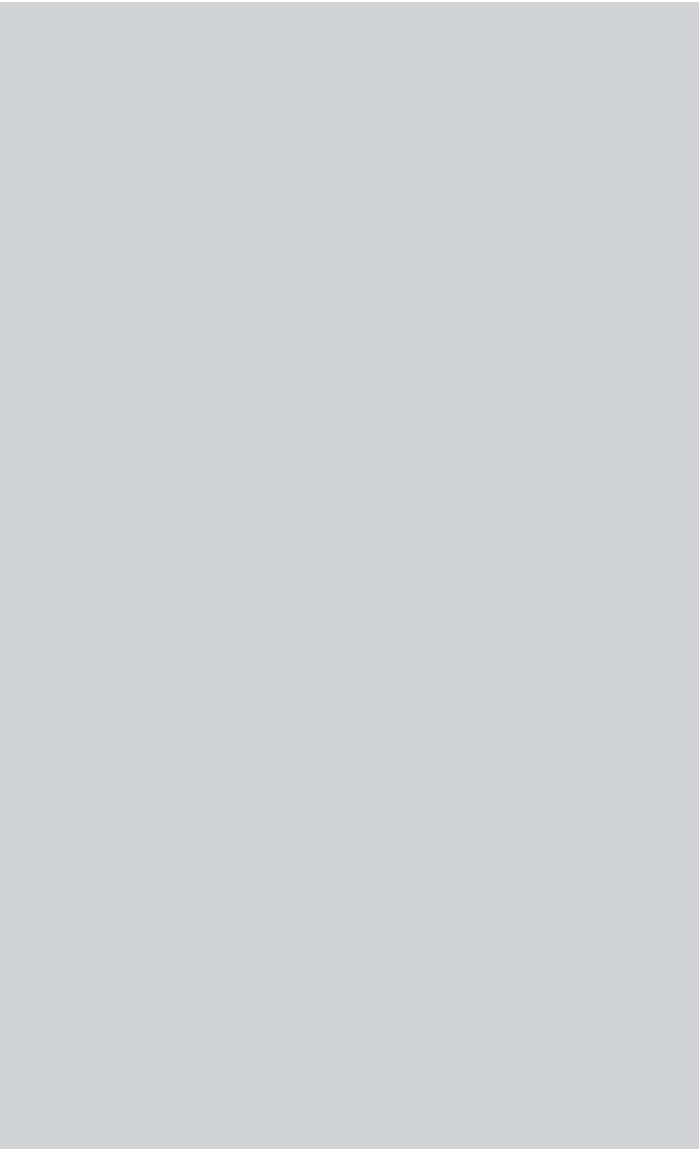
The interior hall shows the level of quality one will continue to see throughout this residence. Maple has been used extensively in the flooring, interior doors, crown mouldings and innovative picture rails. The oversize "9 over 9" double hung windows flood the main floor with light.



Master Bedroom 17'5 x 16'4

There are 3 second floor bedrooms, including the master with ensuite and double closet. There is also a 4 piece bath located on the second floor. The 4th bedroom on the 3rd level features a vaulted ceiling with 5 skylights, a 3 piece bath and separate sitting room/office.





Bedroom 16'5 x 12'11



Bedroom 16'5 x 12'11

The build quality extends into the lower level with a magnificent maple staircase. The lower level rooms feature extra deep lightwells maximizing light and also minimizing the feeling of being in a basement. There is a rough-in for a bath facility.



Recreation Rm 28'6 x 16'2



Laundry 28'6 x 16'2



The extralarge lot features a beautiful garden with a protected ravine at the back of the property. The windows being proportionately correct to the structure help give the whole package undeniable presence.



Kitchen 16'0 x 10'1



- Architectural drawings by Talo Architects Inc.
- Built in 1994 by Lifestyle homes
- Bedrooms - 3 on 2nd floor, 1 on 3rd floor
- Bathrooms - 1 on main floor, 2 on 2nd, 1 on 3rd
- Service - 200 amp
- Heat - natural gas forced air
- Basement - oversized ceiling height
- Silent joist construction
- Triple car garage
- Sprinkler system
- Survey available
- House blueprints available



Square footage - 3,524
 Lot size - 108' x 208'
 Taxes - \$7,661.00 in 2008

Price: \$845,000.00



Perry Quinn
 sales representative
 Office: 905.468.4214
 Cell: 905.468.8621
www.perryquinn.com

